

The background of the cover is a photograph of a ship's rope and a buoy. The rope is thick and coiled, with a wooden buoy attached to it. The buoy is partially submerged in the water, and the background shows a calm sea and a distant shoreline with some buildings. The text is overlaid on the left side of the image.

ANNE ARUNDEL COUNTY PUBLIC LIBRARY

STRATEGY 2022

Navigating innovations in service and success

**A special thanks to the Board of Trustees of the
Anne Arundel County Public Library**

OFFICERS

Donald Roland, Chairman
Joyce Miller, Vice Chairman
Barbara Maxwell, Secretary
Benjamin Birge, Treasurer
Kevin Best, Esq., Counsel

DIRECTORS

Deborah Baden
Tonya Baroudi
Keith Seay

MEMBERS

Joan Beck
Joseph Bles
Amalie Brandenburg
William Colquhoun
Penny Evans
James Harle
Charles Maher
Bert Rice
Jacqueline Seamon
Simmona Simmons
JanElaine Smith
Sanda Solomon
Gerald Starr
Fred Stielow, Ph.D.
Ellan Thorson
Nathan Volke, Esq.
Sharon Wible





Table of Contents

01 Introduction

02 The Process and Components

03 Strategic Environment

Overview of the Library

The Library's Strategic Environment

04 Our Values, Our Purpose, Our Vision

05 Our Goals

07 Acknowledgments

08 Appendix

A. Using Customer and Community Intelligence to Shape the Strategic Plan

B. Reference Data

C. Workshop Materials

D. Bibliography

E. Endnotes

Introduction

For almost 100 years, the Anne Arundel County Public Library, a system of community branch libraries, has been a much-loved part of our area. To fulfill the Library's purpose at the start of its second century of service, the Board of Trustees committed to a thorough and thoughtful study of the Library's role in the health and growth of Anne Arundel County. This knowledge informed the development of the vision and strategies to address our community's needs while meeting the public's expectations for library services.

The resulting Strategy 2022 will serve as a roadmap to respond to the evolving ways users depend upon their Library in the 21st century.

Strategy 2022 will guide planning and providing resources for innovative library services while preserving the core hallmarks upon which our county relies.

Strategy 2022 defines the Library's values, vision, purpose, and goals for the next four years. It will enable library planning and resource allocation so that the needs of the county are met through effective and efficient library services.

The Process and Components

The Process

Strategy 2022 is the result of a five-month process to develop a thorough understanding of Anne Arundel County, its people, places, and challenges, and the Library's role in serving that broad community.

In May 2018, the Library engaged Margaret Sullivan Studio for consultant services and support in developing this strategy. Three distinct advisory groups were formed. These included:

- The *Steering Committee*, comprised of Board of Trustees leadership, provided important insight into the governing body's goals and served in an advisory capacity.
- The *Strategic Thinking Group*, made up of senior library staff, performed much of the background research and crafted initial concepts for exploration.
- The *Staff Working Group*, comprised of front line staff, headquarters staff, and branch managers, conducted critical customer interviews, met several times to discuss ideas and analyze information, and provided real-time perspective.

THE PROCESS

The strategy development process involved four distinct but inter-related and iterative phases.

Phase I: Information Gathering, Planning, and Outreach

The Library explored the needs and stories of customers to develop a strong understanding of community needs and expectations. This work included:

- In-depth review of community demographics developed as part of the December 2017 Facilities Master Plan Study¹
- Extensive examination of the results and implications of the November 2017 library user and non-user surveys conducted by the Anne Arundel Community College Center for the Study of Local Issues²
- Relevant professional readings and research; in particular, the Aspen Institute's October 2014 report, [Rising to the Challenge: Re-Envisioning Public Libraries](#)³, which provides a nation-wide strategic context for the role of the modern public library
- Library staff values and internal program surveys
- Review of the success and shortcomings of the most recent strategic plan
- Community leadership forums
- One-on-one interviews with customers, using directed storytelling, journey mapping, and personal ecosystem mapping
- Observations of customers using the Library
- Strategy Development Workshops with senior Library leadership and staff at all levels and from all locations





Phase II: Developing Strategic Priorities

In this phase, the Library evaluated the studies in Phase I to identify the critical areas of need and to develop priorities to meet those needs. This work involved extensive, iterative consensus-building with all stakeholders to articulate the Library's values, vision, and purpose to align the Library's work to meet those priorities. In developing these priorities, the process focused on three key questions:

1. **Who do we serve?** – The Library developed a clear picture of the wide range of people who make up Anne Arundel County. The research revealed a vast span of economic situations and needs in the county, many of which lie unseen and under-appreciated. See Appendix for details on this study.
2. **Why do we do what we do?** – The research highlighted the Library's work in fulfilling needs in the community, spanning the urgent and life-changing to the purely entertaining and enriching. Simply put, it all comes down to people – the Library exists to serve their customers' needs whether simple or complex

through education, enrichment and inspiration. See Appendix for details on this study.

3. **What is our role in the community?** – The Library is one of many agencies working to improve the quality of life in the county. The Library's traditional role in literacy development was underscored during the strategy development process but newer, innovative roles were also identified. These areas of possible influence included the Library's contributions in developing the educational, economic, and civic health of the community. See Appendix for details on these roles.

Phase III: Developing Strategic Goals

The Library developed strategic goals to meet the needs identified in Phase II and the Strategic Thinking Group engaged key stakeholder groups in an iterative prototyping exercise to develop the five strategic goals identified in this document (see "Our Goals").



Phase IV: Creating the Strategy

During this phase, the Library, working with Margaret Sullivan Studio, developed this document and the associated implementation toolkit.



Components

Our Strategy features four major components:

1. **Our Values** – *“What We Believe”* – form the foundation on which we work for the community and conduct ourselves. The values underpin our work, how interact with each other, and which tactics we use to fulfill our purpose. They are the practices we use every day in everything we do.
2. **Our Purpose** – *“Why We Exist”* – defines the Library’s “mission” – our role in the life of our community.
3. **Our Vision** – *“How We See the Future”* – describes the outcome of our work in the community. It articulates the desired future for our community as a result of our efforts.
4. **Our Goals** – *“Where We Will Focus”* – spell out the specific goals for this strategy. These are the areas where we will concentrate resources to ensure the best outcome for our community.

Library leadership and staff at all levels take these four components together to develop operational (quarterly to yearly) and tactical (monthly to day-to-day) plans to meet community needs and expectations. These plans are informed by, and take their direction from, this strategy forming the basis for long-term resource requests and allocations.



Strategic Environment

Overview of the Library

Anne Arundel County⁴, Maryland, is a jurisdiction of approximately 573,235 residents.⁵ It stretches across 588 square miles and is part of the larger the Baltimore-Washington, DC metropolitan area. The county also boasts a diverse population. Its dynamic economic, historical, and social setting includes urban, suburban, rural, maritime, and recreational features as well as the state capital, Fort Meade, the U.S. Naval Academy, and Baltimore/Washington International Thurgood Marshall Airport (BWI).

The Anne Arundel County Public Library (AACPL) responds to this highly diversified environment with an array of sixteen community libraries. These branches are organized into three regions; there is no central library. Administrative offices are in a separate building. The operating budget for FY-2019 is \$26.2 million, with a materials budget of \$4.0 million. In FY-2018, the Library circulated 5.1 million items and was visited 2.0 million times.

An independent philanthropic arm, the AACPL Foundation, was chartered in 2006. Through its work in engaging the community, the Foundation builds relationships that bring public advocacy along with financial and other support from individuals, businesses, organizations and foundations to enhance the Library's strategic goals.

The Library's physical plant consists of 267,037 square feet in 16 buildings constructed between 1965 and 2004. Two branches have been scheduled and funded for replacement. In 2018, the existing Annapolis Library was demolished and construction began on a 32,500 square foot replacement. In 2019, the 10,500 square foot Riviera Beach Library built in 1971, will be demolished and construction will begin on a 20,000 square foot replacement. The Mountain Road Library has operated in a leased, 8,900 square foot storefront since 1994. The newest branch, Discoveries, opened in 2018 in a 3,100 square-foot storefront in the Westfield Annapolis Mall.



The Library's Strategic Environment

The strategic development process validated a singular, overarching theme that has been at the core of contemporary professional library literature: libraries in general – and AACPL in particular – need to meet new expectations for service in the 21st Century.

Traditionally, library services have been valued on outputs or transactions, such as the number of items circulated, the number of questions answered, and the number of books on the shelf. However, modern libraries are valued in terms of the impact the library has in the lives of people. The modern library achieves transformative outcomes – learning experiences – in its customers and with its partners, such as improvements in skills, knowledge gained, changes in status (employment, educational achievement), or change in life conditions (better health, quality of life). Accordingly, the Library plays a key role in the educational, economic, and civic health of the community.



Our work:

- **Supports parents in preparing their children for school;**
- **Enriches the primary and secondary education experience for all students through enhanced resources and non-curricular educational programs;**
- **Positions young adults for success entering the workforce or higher education through preparatory programs and resources;**
- **Helps adults maintain and enhance workforce skills at every stage of their careers and aspirations;**
- **Provides a source of high-quality entertainment and enjoyment for all ages through books, CDs, DVDs and other materials; and**
- **Enriches the lives of all through health, educational, civic, and social engagement programs provided by both library staff and partner agencies.**

In order to meet these new expectations for memorable, high-quality customer learning experiences, library services should strive to provide experiences focused on:

PEOPLE – The public library is a hub of civic engagement, fostering new relationships, and strengthening the human capital of the community. Library staff are actively engaged in shaping their community. They connect individuals to a vast array of local and national resources and serve as neutral conveners to foster civic health. They facilitate learning and creativity for children and adults alike.

PLACE – The public library is a welcoming space for a wide range of purposes: reading, communicating, learning, playing, meeting, and getting business done. Its design recognizes that people are not merely consumers of content but creators as well. Its physical presence provides an anchor for economic development and neighborhood revitalization, and helps to strengthen social bonds and community identity. The library is also a virtual space where individuals can gain access to information, resources and all the rich experiences offered.

PLATFORM – The public library is user-centered in both physical and virtual locations. The library enables the curation and sharing of the community's knowledge and innovation. A great library platform is a "third place" – an interactive entity that can facilitate operating individually as well as in groups – and supports the learning and civic needs of the community.

Taken together, these three elements – people, place, and platform – call for innovations in library services, spaces, and staffing. Therefore, the Library's Strategy seeks to realign its strengths and resources to meet current and emerging community needs through both traditional and innovative services provided by an agile, entrepreneurial staff. This alignment realizes the Library's core, distinctive skill: ***we bring the immense, overwhelming world of information down to human scale, enabling all the opportunity to change their lives for the better.***



Our Values

Commitment

We work with passion and resilience, dedicated to our personal best.

Compassion

We are empathetic, patient, and kind.

Diversity

We celebrate the variety of backgrounds and experiences in our community and staff, treating everyone with respect.

Empowerment

We foster a community of learning and growth for people of all ages.

Informed Decision-making

We listen and are responsive to our community and staff.

Innovation

We encourage creativity, exploration, and a sense of adventure.

Integrity

We are honest, transparent, and accountable.

Teamwork

We work together in a spirit of cooperation.

Our Purpose

“To educate, enrich, and inspire.”

The planning process reaffirmed the Library’s mission statement that was adopted in 2015.

Our purpose rests on three pillars:

- 1. To Educate – the Library provides information resources and programs to support learning in all phases of life, in both traditional, curriculum-based settings, as well as in nontraditional, innovative, and experiential venues.**
- 2. To Enrich – the Library brings literature and information in written, verbal, and visual forms to all, for personal growth and enjoyment as well as to deepen understanding and awareness of personal, civic, and economic issues.**
- 3. To Inspire – the Library helps people realize their dreams, imagine possibilities beyond the everyday, and develop a path to self-improvement and fulfillment.**

Our Vision

“A welcoming, resilient community where all can realize life to its fullest potential.”

Our vision describes the desired outcome of the Library’s work in the county. It defines the future aspirations for our community as a result of our efforts.

This vision recognizes the great disparity of needs in our county. Anne Arundel is rich in economic resources, but even here, poverty amidst plenty exists. The Library plays an important role as the “Great Equalizer,” providing access to resources to enable every county resident the opportunity to achieve and enjoy a fulfilling life.

Our Goals

Our goals reflect community priorities identified in the strategic development process. They are broadly defined to allow senior library leadership and individual branch managers the latitude to develop locally tailored programs and services to meet each community's diverse needs.

Our Goals

**BETTER
COLLECTIONS,
BETTER ACCESS**

THRIVING MINDS

TAILORED SERVICES

**ENTREPRENEURIAL
STAFF**

**EFFECTIVE
PARTNERSHIPS**

Our Goals

GOAL 1: BETTER COLLECTIONS, BETTER ACCESS

What this means:

- We provide materials in a variety of formats.
- We ensure Library collections are responsive to community interests and needs.
- We strive to eliminate all barriers to use, whether they be policy-, technical-, or ability-based.
- We connect Library collections to everything we do: all our other services and programs naturally lead to increased readership.

Potential outcomes from meeting this goal:

- Improved educational results and economic outlooks for individuals
- Engaged, informed and satisfied residents
- Increased customer satisfaction and increased use of library resources



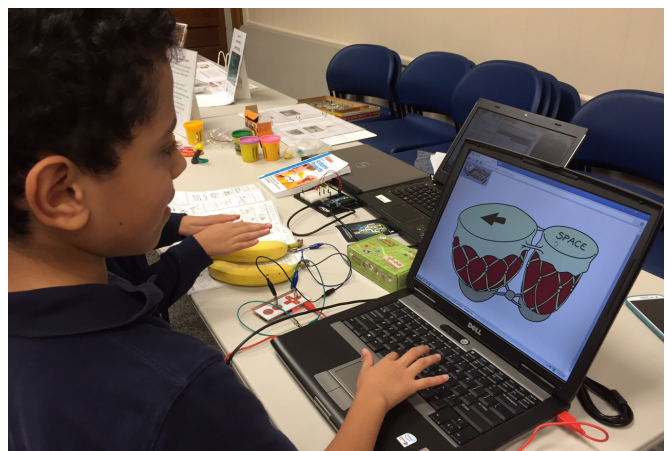
GOAL 2: THRIVING MINDS

What this means:

- We develop engaging and diverse programming to young learners – Every Child Ready to Read, 1000 Books Before Kindergarten - to build on the success of the previous strategic plan.
- We provide welcoming spaces and appealing programs for teens to prepare them for college or career as well as provide a safe place.
- We provide services and programs to enable adults to enjoy life fully and continue to contribute to the health of the community.

Potential outcomes from this goal:

- Increased kindergarten readiness
- Increased High school graduation and college acceptance rates
- Agile, future-ready workforce
- An eager and available pool of mature, experienced adults who continue contributing to the community in retirement



GOAL 3: TAILORED SERVICES

What this means:

- We highlight community library services, including options to build specialized information collections on-site, in coordination with virtual holdings for the entire county.
- We provide the same core services through every branch and platform and allow flexibility for branch staff to adjust for local needs.
- We recognize and celebrate the diversity of community residents and their needs by providing access to a variety of high quality services and programs.
- We design all aspects of our services – how customers access our resources, material format, language, and program delivery – to meet needs at the local and individual scale.

Potential outcomes from this goal:

- Neighborhood residents tightly identify with and are connected to their branch
- Equitable access to services regardless of where a person lives
- Enhanced partnership opportunities and packages of services with local organizations and governmental agencies



GOAL 4: ENTREPRENEURIAL STAFF

What this means:

- We empower all staff, at all levels and at every position, to innovate and experiment.
- We are creative in developing initiatives and programs to meet local needs, while remaining true to library-wide goals and coordination with the Board of Trustees.
- We are dedicated to professional, organizational, and individual development.

Potential outcomes from this goal:

- A dedicated, engaged, and creative staff
- Already excellent customer service is taken to the next level
- Positioning the Library as an innovator



GOAL 5: EFFECTIVE PARTNERSHIPS

What this means:

- We “connect it all,” leveraging past success in building relationships with community partners, recognizing that needed services and programs are already provided by a variety of agencies and organizations and that the Library is best positioned to make these vital connections.
- We harmonize our services and programs with those of our partners to minimize duplications and take advantage of supporting opportunities.
- We use partnerships to their best effects, leveraging resources and talents to maximize the impact of the Library’s assets and our partners’ outcomes.

Potential outcomes from this goal:

- Reach and effectiveness of our partners is increased
- Resource “deserts” are eliminated.
- Positioning the library as a connector and vital community partner



Acknowledgments

Acknowledgments

This document would not have been possible without the contribution of the Board of Trustees, Anne Arundel Public Library staff members, and dedicated community members who engaged in interviews and workshop sessions to articulate the Strategic Goals of the Anne Arundel County Public Library system.

STRATEGIC PLANNING COMMITTEE

Fred Stielow, Ph.D., Chair, Strategic Planning Project

STEERING COMMITTEE

Fred Stielow

Benjamin Birge

Deborah Baden

Keith Seay

Karen Smith

SENIOR LEADERSHIP TEAM

Skip Auld, Chief Executive Officer

Terry Bowen, Chief, Human Resources

Christine Feldmann, Marketing and Communications Manager

Ann Glenn, Executive Director of Library Foundation

Cathy Hollerbach, Chief, Public Services & Branch Management

Rudy Rodela, Chief, Support Services

Scott A. Sedmak, Chief Financial Officer

LIBRARY TRANSFORMATION TEAM

Natalie Benjamin

Lorelei Bidwell

Carol Cason

Laurel Fisher

Mark Freeman

Jeb Hall

Darnice Jasper

Brandon Jones

Sarah Kachevas

Julie Kizer Ball

Aurelia Larrimore

Sheila Makell

Steve Mangum

Catherine McNamara

Miriam Melendez-Villalta

Rachel Myers

Angela Nambiar

Laura Namovicz

Stephanie Petruso

David Piper

Judy Poyer

Anne Pusey

Dan Ramirez

Heather Ravanbakhsh

Ashley Rogers

Jesse Roth
Robin Soma-Dudley
Amanda Spino
Kathleen Zawodny
Samantha Zline

Lex Birney, The Brick Companies
Kathryn Black, The ARC of the
Central Chesapeake Region
Martha Blaxall, Arts Council of
Anne Arundel County

Melissa Curtin, Community
Foundation of Anne Arundel
County
Margaret Davis, Maryland Hall
Connie Del Signore, Visit Annapolis

COMMUNITY LEADERSHIP

Duane Abrogast, The Children's
Guild

Jacqueline Boone Allsup,
Anne Arundel County NAACP

JoAnne Dement, Anne Arundel
County Literacy Council

Yousuf Ahmad, Northern Anne
Arundel County Chamber of
Commerce

Emily Brophy, Westfield Mall -
Annapolis

Tony Diekemper, Skyline
Technology Solutions

Tim Altomare, Anne Arundel
County Police Department

Bob Burdon, Anne Arundel County
Chamber of Commerce

Frank DiVenti, Visit Annapolis

EJ Amytot, The Y in Central
Maryland

Trenda Byrd, Banneker-Douglas
Museum

Katie Dragos, Annapolis Pediatrics

Rick Anthony, Anne Arundel
County Recreation and Parks

Allen Carletta, Ph.D., Asbury United
Methodist Church

Jim and Sylvia Earl, Helena
Foundation

George Arlotto, Anne Arundel
County Public Schools

Maria Casasco, Anne Arundel
County Hispanic/Latino
Outreach

Michael Ebeling, Summit School

Peter Baily, Association of
Independent Maryland & DC
Schools (AIMS)

Doug Cashmere, Pasadena
Business Association

Eric Edstrom, Leadership Anne
Arundel

Victoria Bayless, Anne Arundel
Medical Center

Shauna Chabot, Hospice of the
Chesapeake

Linda Eggbeer, Anne Arundel
Women Giving Together

Cathy Belcher, Community
Volunteer

Chelsea Chaney, The Chaney
Foundation

Annette Fisher, Baltimore/
Washington International
Thurgood Marshall Airport (BWI)

John Belcher, JMCB Enterprise
Solutions

Nancy Choice, Community
Volunteer

Gaston Gamez, Anne Arundel
County Public Schools

Julie Belkin, 3 Points Products, Inc.

Betsy Chotine, Anne Arundel
Women Giving Together

Carmen Gonzales, Maryland Live!
Casino

Mario Berninzoni, Arundel House
of Hope

Rod Cofield, Historic London Town
& Gardens

Bill Greene, Anne Arundel County
Public Library Diversity Advisory
Board

Justin Bieler, Anne Arundel County
Department of Social Services

Katie Cooke, Community Volunteer

Roy Griffith, Rockbridge Academy

Rosa Cruz, Anne Arundel Economic
Development Corporation

James Harvey, Rotary Club of
Crofton

Robin Hatfield, Rotary Club of
Southern Anne Arundel County

Janice Hayes-Williams, City of Annapolis	Jennifer Lagrotteria, Boys and Girls Clubs of Annapolis and Anne Arundel County	Adrienne Mickler, Anne Arundel County Mental Health Agency
Heather Epkins, Governor's Office for Children	Jean Langston, Anne Arundel County Public Library Diversity Advisory Board	Barbara Moeller, Glen Burnie Improvement Association
Joe Hudson, Annapolis Police Department	Ray Langston, Anne Arundel County Public Library Diversity Advisory Board	Kirkland Murray, Anne Arundel County Workforce Development
Belinda Fraley, Huesman Chesapeake Arts Center	Adrianna Lee, Annapolis Hispanic Community Services	Julie Mussog, Anne Arundel Economic Development Corporation
Brooke Hurman, Celebree Learning Centers	Matt Lewis, YWCA	Michael Naghdi, Rotary Club of Lake Shore and Severna Park
Alan Hyatt, Severn Bank	Dawn Lindsay, Ph.D., Anne Arundel Community College	Matthew Nespole, Key School
Mary Frances Isakov, M&T Bank	Lisa Lindsay, Ph.D., Boys and Girls Clubs of Annapolis and Anne Arundel County	LaToya Nkongolo, Worklife Urgent Care
Williams Joan, Ginger Cove	Michelle Lucente, Children's Theatre of Annapolis	Patrick Nugent, Annapolis Symphony Orchestra
Chad Jones, Department of the Army, Fort Meade Public Affairs Office	Corwin Macklin, Anne Arundel County Community Action Agency, Inc.	April Nyman, Arts Council of Anne Arundel County
Pam Jordan, Anne Arundel County Aging and Disabilities	Ben Marcantonio, Hospice of the Chesapeake	Karen Olscamp, University of Maryland, Baltimore Washington Medical Center
Pano Kanelos, St. Johns College	Jason Marshall, American Red Cross	Cindy O'Neil, Community Volunteer
Carolyn Kirby, Annapolis Summer Garden Theater	Derek Matthews, Anne Arundel County Director of Community and Minority Outreach	Mairead O'Reilly, Annapolis Orthodontics
Molly Knipe, YWCA of Annapolis & Ann Arundel County	Jo Ann Mattson, Lighthouse Shelter	Megan Orzechowski, Greater Severna Park and Arnold Chamber of Commerce
Terry Kokolis, Anne Arundel County Detention Facilities	Carol Ann McCurdy, Anne Arundel County Public Schools	Irene Padilla, Maryland State Library Agency
Milena Kornyl, Anne Arundel Workforce Development		Pamela Brown, Anne Arundel County Partnership for Children, Youth & Families
Raj Kuchadkar, The Central Maryland Chamber of Commerce		
Douglas Lagarde, Severn School		

Shirley Panek, The Colonial Players	Stephanie Smith, Rockwell Collins
Jerry Parks, Jerome J. Parks Companies	Dr. Jane Snider, Heads-Up Consultants
Sandi Parrish, Pasadena Business Association	Cynthia Steinhoff, Anne Arundel Community College
Cheryl Phillips, Fort Meade Public Affairs	Christi Swanson, Westfield Mall - Annapolis
Frances Phillips, Anne Arundel County Department of Health	Kathy Swekel, Annapolis Opera Company
Ramond Robinson, Anne Arundel County Office of Transportation	Steven Thomas, Anne Arundel County Police, Crisis Response Team
Randy Rice, Community Volunteer	Mary Tillar, Anne Arundel County Public Schools
Jonathon Rondeau, The ARC of the Central Chesapeake Region	Reverend Stephen Tillett, Anne Arundel County NAACP
Honorable Bill Sanders, Mayor, Highland Beach	Tim O’Ferrall, Fort Meade Alliance
Robert Sartwell, Rotary Club of Western Anne Arundel County	Pat Troy, Next Wave Media Group
Kurt Schmoke, Anne Arundel County Public Library Diversity Advisory Board	Liz Vanden Huevell, Greater Annapolis Interfaith Network
Sean Schneider, Centro de Ayuda	Lisa Vernon, Anne Arundel County Literacy Council
Dan Scholfeld, Greater Crofton Council	Carly Webb, Monarch Academy Annapolis
Nancy Schrum, Anne Arundel County Office of the Executive	Sue Weber, Rotary Club of Annapolis
Susan Seifried, Visit Annapolis	Carnitra White, Anne Arundel County Department of Social Services
Lauren Silbermann, Historic London Town & Gardens	Mizetta Wilson, Community of Hope
Robert Smith, Rotary Club of Parole	Roxana, Caliente Grill

Appendix

Appendix

“Using Customer and Community Intelligence to Shape the Strategic Plan” - This report was created by Danielle Milam for Anne Arundel County Public Library Steering Committee

Reference Data - used to inform Strategy 2022

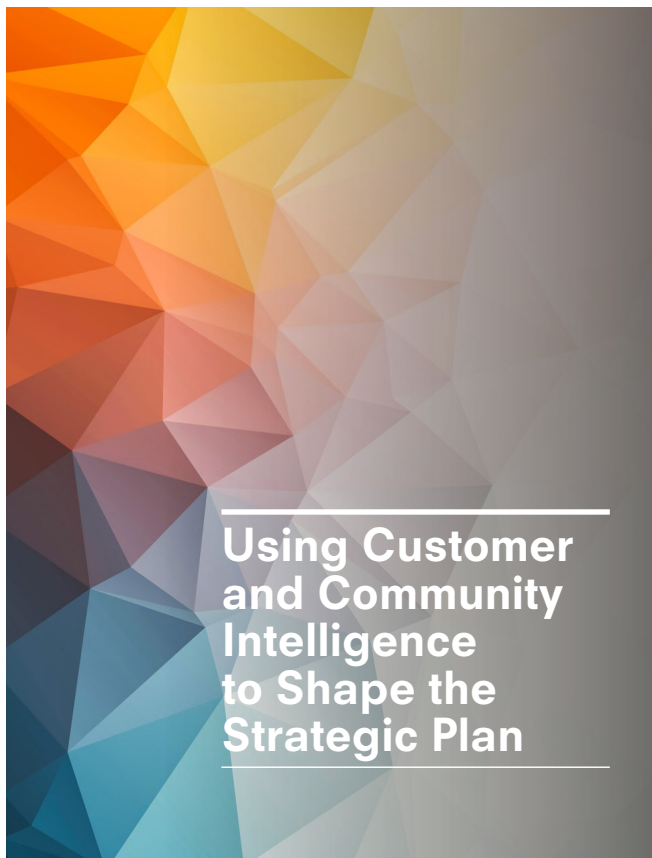
- a. User and Non-user Surveys
- b. Directed Storytelling Interviews
- c. Organizational Brief Results
- d. ESRI Tapestry
- e. Branch Manager Questionnaires

Workshop Materials Generated

- a. My AACPL Zine
- b. Persona Zines

Bibliography

Customer Intelligence Report



This report was created by Danielle Milam for Anne Arundel County Public Library Steering Committee. The full report can be found [here](#).

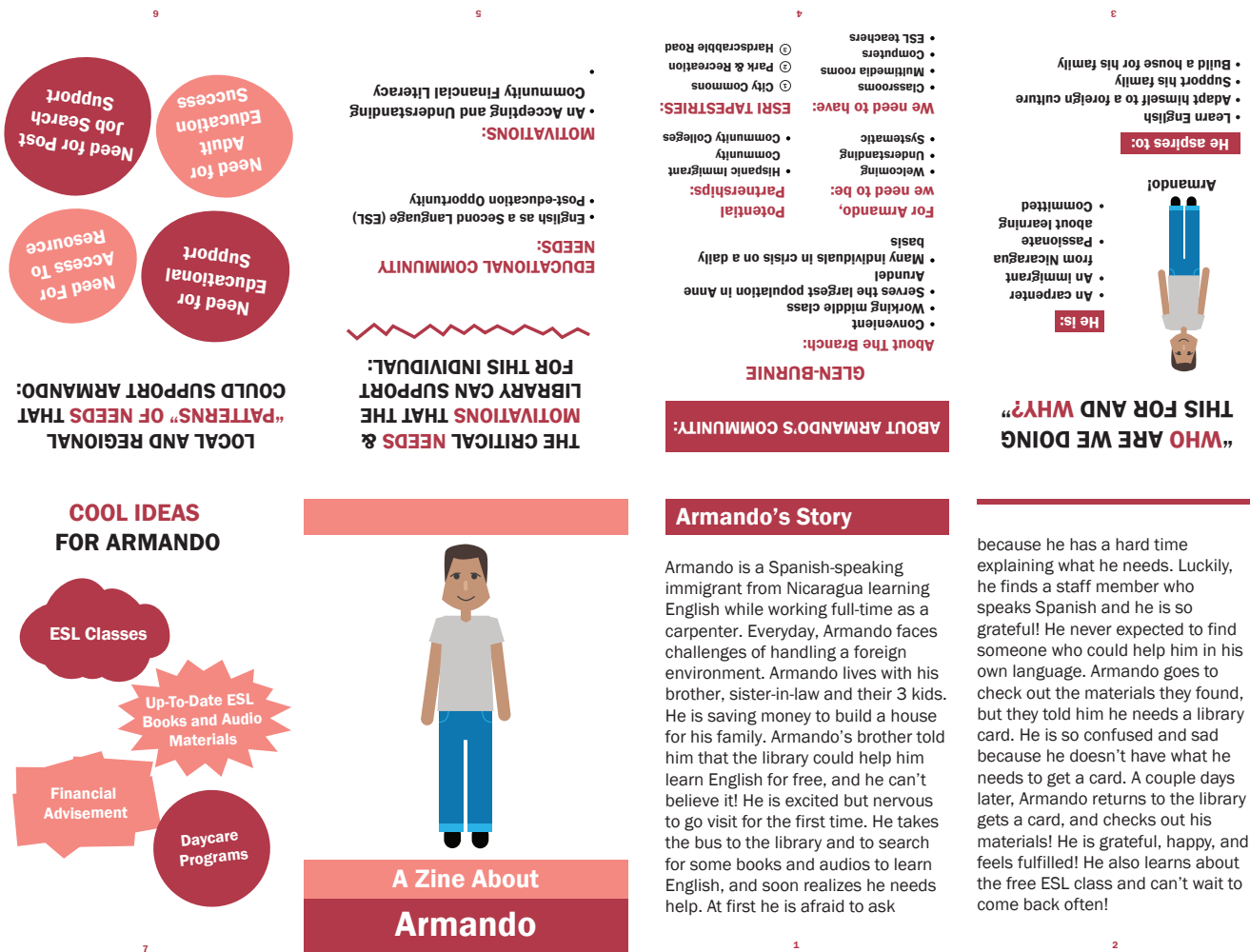
Zines

A one-page, foldable, pocket-sized zine was created for Workshop #3 as a summary of the Strategy for leadership and staff; the full size document can be found [here](#).



Zines

A one-page, foldable, pocket-sized customer persona was created for Workshop #4. Six persona zines were generated and can be viewed [here](#).



Bibliography

READING MATERIALS

The Aspen Institute, Rising to the Challenge: Re-Envisioning Public Libraries, 2014

Community Foundation of Anne Arundel County, Poverty Amidst Plenty: Striving to Achieve Progress For All, Fifth Edition, 2015

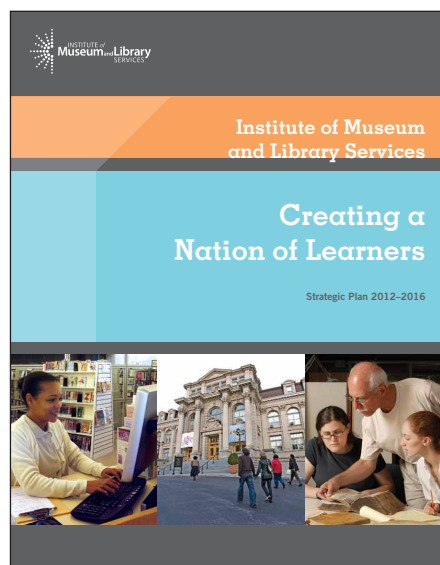
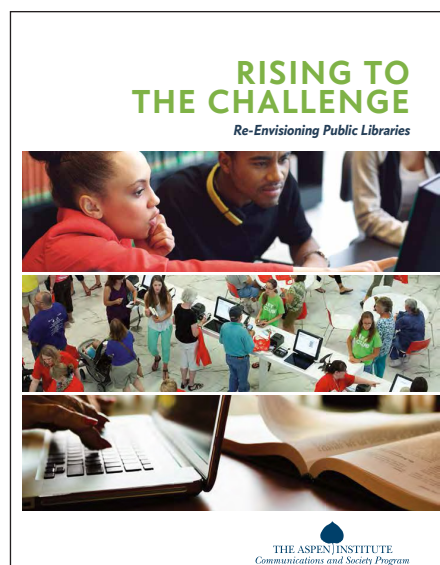
Urban Libraries Council, Making Cities Stronger: Public Library Contributions to Local Economic Development, 2007

Online Computer Library Center, Inc., The 2003 OCLC Environmental Scan: Pattern Recognition, 2003

Institute of Museum and Library Services, Creating a Nation of Learners: Strategic Plan 2012-2016, 2012

Bell, Steven. "From Change Management to Change-Ready Leadership: Leading From the Library." *Library Journal* 01 Mar 2018.

Institute of Museum and Library Services, Museums, Libraries, and 21st Century Skills, 2009



Endnotes

- 1 <https://www.aacpl.net/facilities-master-plan>
- 2 <http://www.aacc.edu/about/administrative-offices/sarbanes-center-for-public-and-community-service/center-for-the-study-of-local-issues/>
- 3 <http://csreports.aspeninstitute.org/documents/Aspen-LibrariesReport-2017-FINAL.pdf>
- 4 <https://www.aacounty.org/index.html>
- 5 <https://www.census.gov/quickfacts/fact/table/annearundelcountymaryland#viewtop>